

MODEL NAME

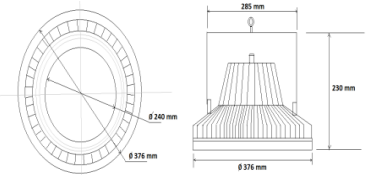
EELS 120W ML HB with lens

Characteristic		Parameters	
MECHANICAL SPECIFICATION	Fixture Housing	Pressure Die-Cast Aluminium Housing (Heatsink)	
	Fixture Dimension	376 mm X 230 mm	
	Diffuser Closure	Toughened Glass	
	Weight	6.650 Kg	
	IP Standard	IP65	
LUMINARIES	Total Wattage	120 Watts	
	Initial Lumen	14400 Lumen	
	Luminaire Efficacy (Lm/Watt)	120 Lm/W	
	Life	50,000 Burning Hours	
	Starting Time	Rapid (0.2 sec)	
Operating Temperature	From -20° to +60° C		
LED DRIVER	Type of Driver	Constant Current (CC)	
	Input Voltage Range	150 VAC ~ 265 VAC	
	Frequency Range	50 Hz	
	Power factor	> 0.98	
	Total Harmonic Distortion	< 10 %	
	Surge Protection	3.75 Kv	
	Protection	Surge Protection, Output Short Circuit Protection, Over Load Protection, Over Voltage Protection	
LED LAMP	Light Source	SMD LED	
	Lamp Efficacy	> 150 Lm/W	
	Colour Temperature	3000 K - 6500 K	
	CRI	> 80	
	Certification/Report	LM80 / Photo Bio.Test	
	Identification Feature	Unique Serial No.Printed on each Lamp	
OPTICS	Beam Angle	90°	
	Optics Type	PC/PMMA lens	
MOC of Optics	PC/PMMA		
APPLICATION		The luminaries can be used for lighting of indoor high bay applications in all type of industries	

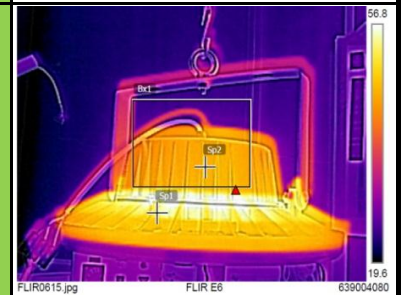
PRODUCT IMAGE



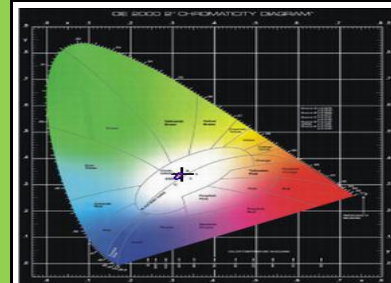
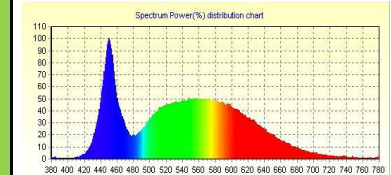
SCHEMATIC IMAGE



THERMAL IMAGE



LED SPECTRUM



LIGHT DISTRIBUTION

