

Eetamax Clara Cleanroom Lights



Top Openable Cleanroom Lights

Features :

- ❑ Aesthetically designed housing made from CRCA
- ❑ Electrostatically powder coated for corrosion resistance
- ❑ Bottom frame with powder coated finish or in SS 304 grade in mirror finish
- ❑ Milky acrylic diffuser sealed with non-hygroscopic VHB gasket to ensure moisture proof and dust proof performance
- ❑ Ingress Protection IP54 / IP65
- ❑ Impact Resistant IK 07
- ❑ Removable LED driver for easy maintenance from top side
- ❑ Two way connectors for loop-in loop-out cable connection
- ❑ Suitable for slab mounting and walkable modular panels
- ❑ Suitable for Class 100 to Class 1000 applications

Cleanroom SS Frame



Cleanroom MS Frame



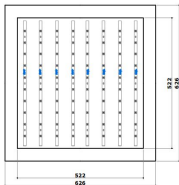
Applications :

- Biochem industries
- Pharmaceutical industries
- Chemical industries
- Sterilizations rooms
- Operation theaters
- Food & Beverage industries
- Hotels & Kitchens

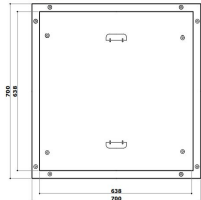
Recessed Mounting Top Openable Cleanroom

DIMENSIONAL DRAWINGS

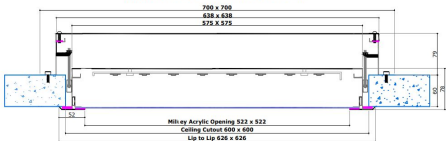
BOTTOM VIEW



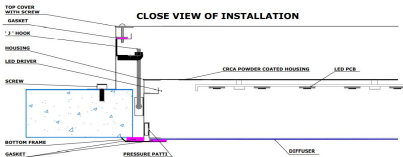
TOP VIEW



MOUNTED & DIMENSION VIEW



CLOSE VIEW OF INSTALLATION



Product Technical Datasheet

Eetamax Clara 2X2 Recessed Cleanroom - Top Openable Lights

Luminaire Specification

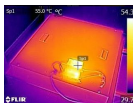
Available Variant	25W / 30W / 35W / 40W / 50W / 60W / 80W / 100W
System Efficacy(Lm/Watt)	>100 lm/W
L70 Life	>54,000 Br.hrs
Operating Temperature	From 0° to +50° C

LED Driver Specification

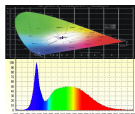
Type of Driver	Constant Current
Input Voltage Range	180 VAC ~ 300 VAC
Frequency Range	50 Hz - 60 Hz
Power factor	> 0.97
Total Harmonic Distortion	< 10 %
Surge Protection	4 kV + 10 kV External SPD
Protection	Surge Protection, Output Short Circuit, Overload Protection, Over Voltage Protection, Thermal Protection, Mis- Wiring Protection, 440 VAC protection
EMI / EMC	EMI / EMC compliance (optional)

LED lamp

Light Source	SMD LED
Lamp Efficacy	>150 lm/W
Colour Temperature	1700K-6500K, @590nm Sodium Light also available
CRI	>70
Certification/Report	LM80, Photo Biologically safe
Beam Angle	120°



Good Thermal
Management for
maintenance free long life



In-house
photometry test lab



Electrical power analysis
and insulation safety
testing of 100% products