



Eetamax Energy Efficient Lighting Systems

PRODUCT TECHNICAL DATASHEET

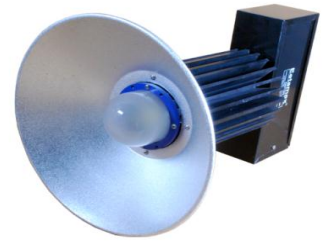


MODEL NAME

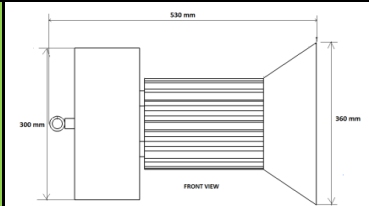
EELS 150W COB HB

| Characteristic | | Parameters | |
|--------------------------|------------------------------|--|--|
| MECHANICAL SPECIFICATION | Fixture Housing | Extruded Aluminium Housing (Heatsink) | |
| | Fixture Dimension | 530 mm X 360 mm X 300 mm | |
| | Diffuser Closure | Diffused glass lens is provided on COB LED | |
| | Weight | 7.250 Kg | |
| | IP Standard | IP65 | |
| LUMINARIES | Total Wattage | 150 Watts | |
| | Initial Lumen | 17250 Lumen | |
| | Luminaire Efficacy (Lm/Watt) | 115 Lm/W | |
| | Life | 50,000 Burning Hours | |
| | Starting Time | Rapid (0.2 sec) | |
| | Operating Temperature | From -20° to +60° C | |
| LED DRIVER | Type of Driver | Constant Current (CC) | |
| | Input Voltage Range | 100 VAC ~ 305 VAC | |
| | Frequency Range | 50 Hz | |
| | Power factor | > 0.98 | |
| | Total Harmonic Distortion | < 10 % | |
| | Surge Protection | 6 Kv | |
| | Protection | Thermal Protection, Output Short Circuit Protection, Over Load Protection, Surge Protection, Over Voltage Protection | |
| LED LAMP | Light Source | COB LED | |
| | Lamp Efficacy | > 150 Lm/W | |
| | Colour Temperature | 3000 K - 6500 K | |
| | CRI | > 80 | |
| | Certification/Report | LM80 / Photo Bio.Test | |
| | Identification Feature | Unique Serial No.Printed on each Lamp | |
| OPTICS | Beam Angle | 90° | |
| | Optics Type | Diffused Glass Lens | |
| | MOC of Optics | Diffused Borosilicate Glass | |

PRODUCT IMAGE



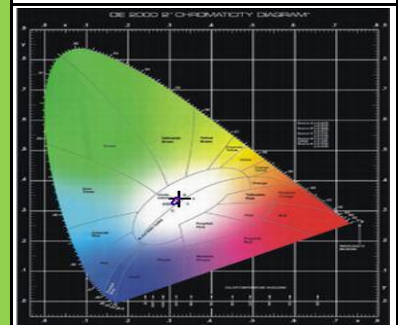
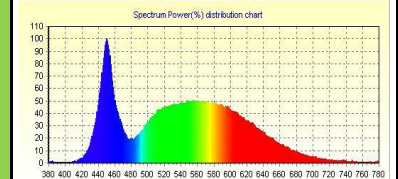
SCHEMATIC IMAGE



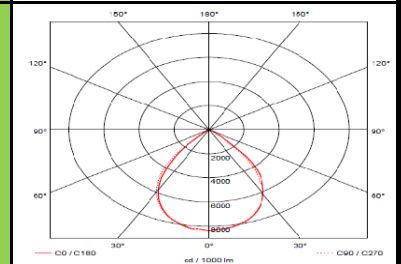
THERMAL IMAGE



LED SPECTRUM



LIGHT DISTRIBUTION



APPLICATION

The luminaires can be used for lighting of indoor high bay applications in all type of industries

