

# Eetamax Clara Cleanroom Lights



## Top Openable Cleanroom Lights

### Features :

- Aesthetically designed housing made from CRCA
- Electrostatically powder coated for corrosion resistance
- Bottom frame with powder coated finish or in SS 304 grade in mirror finish
- Milky acrylic diffuser sealed with non-hygroscopic VHB gasket to ensure moisture proof and dust proof performance
- Ingress Protection IP54 / IP65
- Impact Resistant IK 07
- Removable LED driver for easy maintenance from top side
- Two way connectors for loop-in loop-out cable connection
- Suitable for slab mounting and walkable modular panels
- Suitable for Class 100 to Class 1000 applications

### Cleanroom SS Frame



### Cleanroom MS Frame



### Applications :

- |                             |                              |
|-----------------------------|------------------------------|
| ● Biochem industries        | ● Operation theaters         |
| ● Pharmaceutical industries | ● Food & Beverage industries |
| ● Chemical industries       | ● Hotels & Kitchens          |
| ● Sterilizations rooms      |                              |

## Product Technical Datasheet

### Eetamax Clara 2X2 Recessed Cleanroom - Top Openable Lights

#### Luminaire Specification

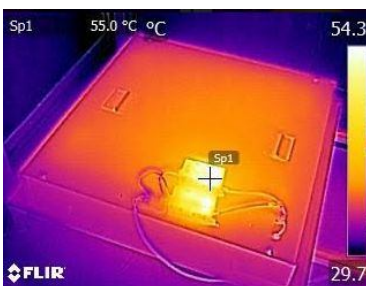
Available Variant	25W / 30W / 35W / 40W / 50W / 60W / 80W / 100W
System Efficacy(Lm/Watt)	>100 lm/W
L70 Life	>54,000 Br.hrs
Operating Temperature	From 0° to +50° C

#### LED Driver Specification

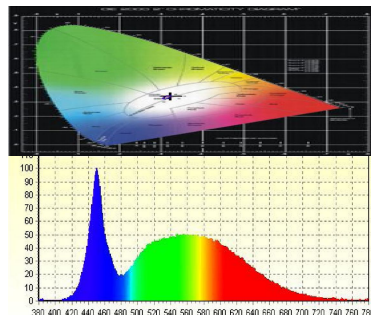
Type of Driver	Constant Current
Input Voltage Range	150 VAC ~ 265 VAC
Frequency Range	50 Hz
Power factor	> 0.97
Total Harmonic Distortion	< 10 %
Surge Protection	4 kV
Protection	Surge Protection Output Short Circuit Overload Protection Over Voltage Protection Mis- Wiring Protection
EMI / EMC	EMI / EMC compliance (optional)

#### LED lamp

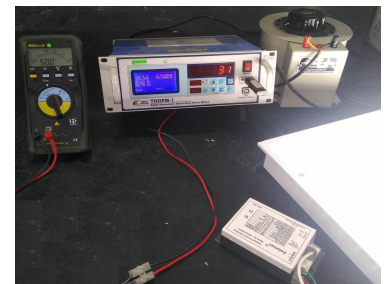
Light Source	SMD LED
Lamp Efficacy	>150 lm/W
Colour Temperature	1700K-6500K, @590nm Sodium Light also available
CRI	>70
Certification/Report	LM80, Photo Biologically safe
Beam Angle	120°



Good Thermal  
Management for  
maintenance free long life



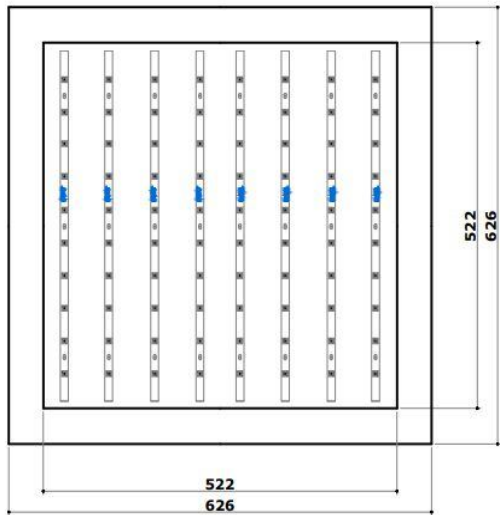
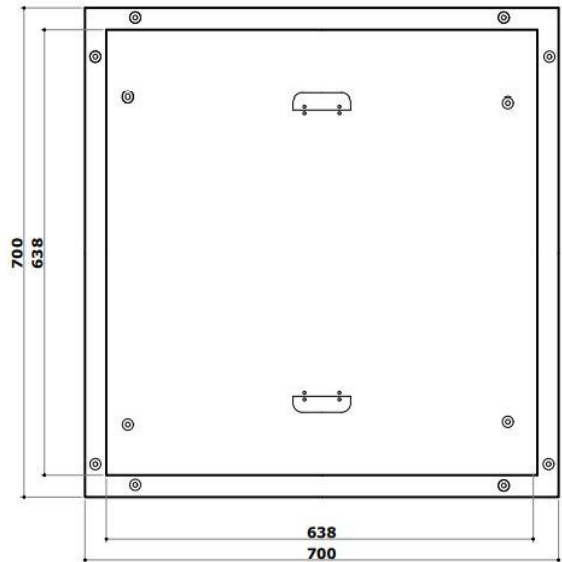
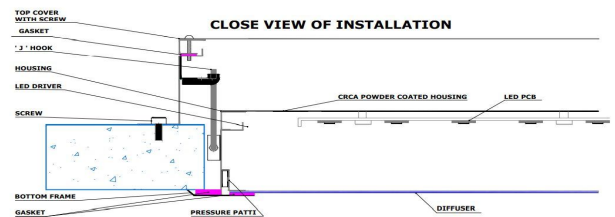
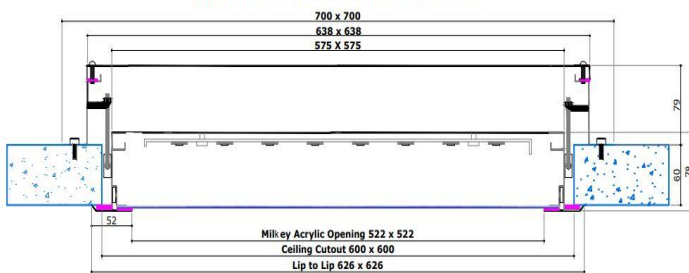
In-house  
photometry test lab



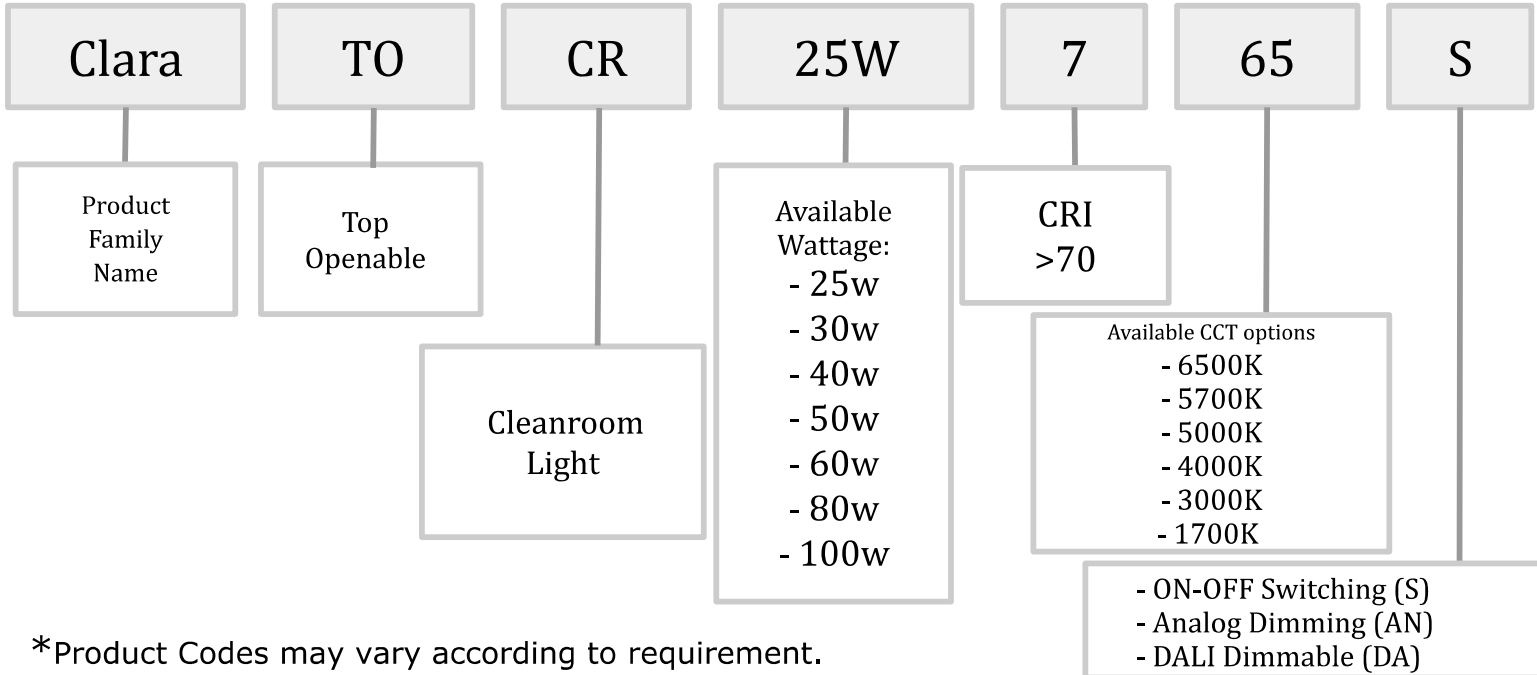
Electrical power analysis  
and insulation safety  
testing of 100% products

# Recessed Mounting Top Openable Cleanroom

## DIMENSIONAL DRAWINGS

**BOTTOM VIEW**

**TOP VIEW**

**MOUNTED & DIMENSION VIEW**


### Product Code Nomenclature



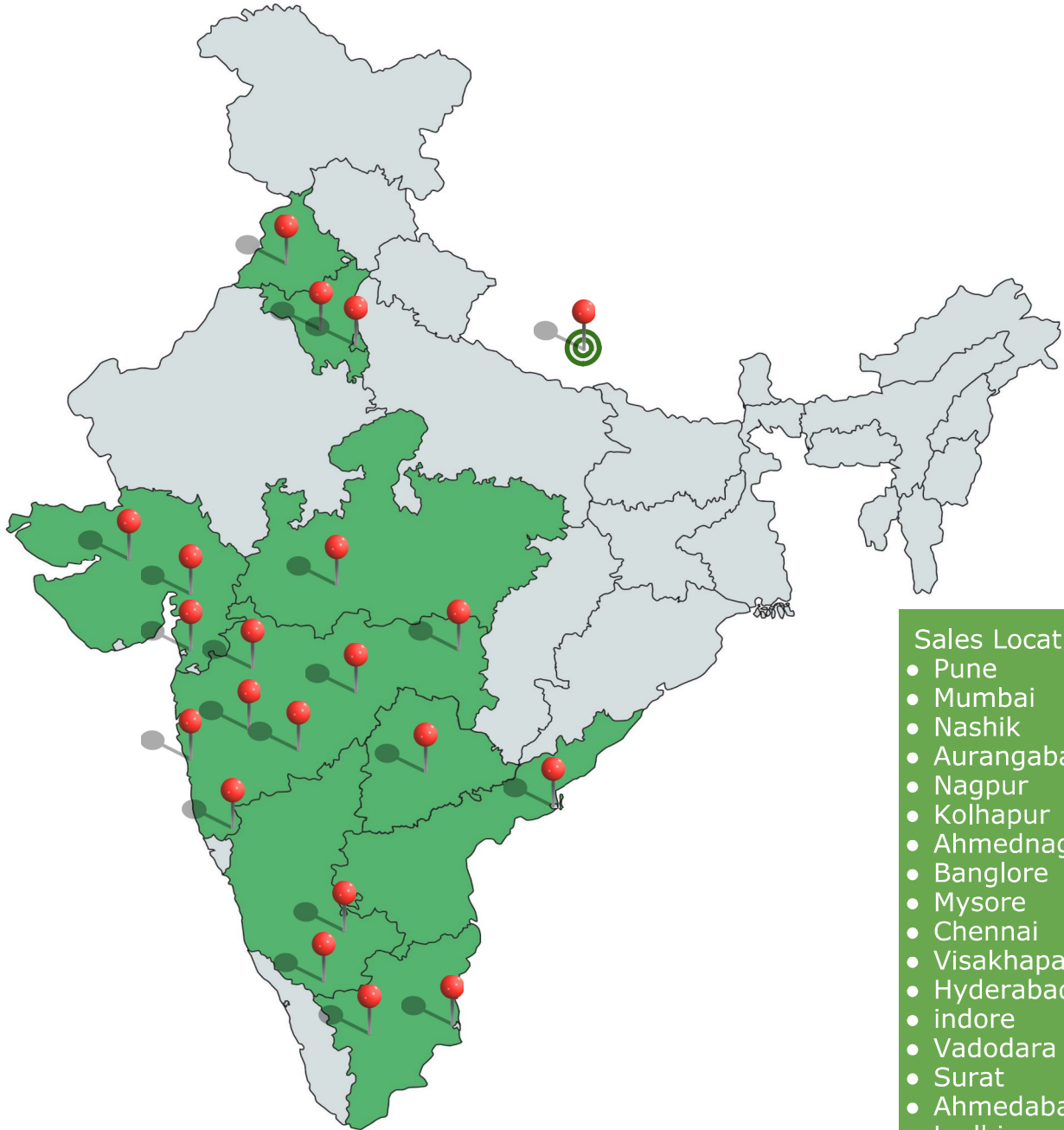
\*Product Codes may vary according to requirement.



**Eetamax**  
Energy Efficient LED Lighting Systems

WE OFFER  
**MOST**  
EFFICIENT  
QUALITY  
LIGHT

# Eetamax Sales Locations



## Sales Locations :

- Pune
- Mumbai
- Nashik
- Aurangabad
- Nagpur
- Kolhapur
- Ahmednagar
- Bangalore
- Mysore
- Chennai
- Visakhapatnam
- Hyderabad
- indore
- Vadodara
- Surat
- Ahmedabad
- Ludhiana
- Bahadurgarh
- Delhi
- Nepal

Contact Us

**Eetamax Energy Solutions Pvt. Ltd.**

L-141, MIDC Industrial Area, Ahmednagar- 414111, Maharashtra India

Email : [marketing@eetamax.com](mailto:marketing@eetamax.com) | Website : [www.eetamax.com](http://www.eetamax.com)

Follow Us on Social Media

