

## Technical Datasheet

# Eetamax Clara Cleanroom Lights



## Bottom Openable Cleanroom Lights

### Features :

- ☐ Aesthetically designed housing made from CRCA
- ☐ Electrostatically powder coated for excellent corrosion resistance
- ☐ Bottom frame with powder coated finish or in SS 304 Grade in mirror finish
- ☐ Milky acrylic diffuser sealed with non-hygroscopic VHB gasket to ensure moisture proof and dust proof performance
- ☐ Ingress Protection IP54 / IP65
- ☐ Impact Resistant IK 07
- ☐ Removable LED driver for easy maintenance from top side
- ☐ Two way connectors for loop-in loop-out cable connection
- ☐ Suitable for slab mounting and walkable modular panels
- ☐ Suitable for Class 10,000 to Class 1,00,000 applications

### Cleanroom SS Frame



### Cleanroom MS Frame



### Applications :

- |                             |                              |
|-----------------------------|------------------------------|
| • Biochem industries        | • Operation theaters         |
| • Pharmaceutical industries | • Food & Beverage industries |
| • Chemical industries       | • Hotels & Kitchens          |
| • Sterilizations rooms      |                              |

## Product Technical Datasheet

### Eetamax Clara 2X2 Recessed Cleanroom - Bottom Openable Lights

#### Luminaire Specification

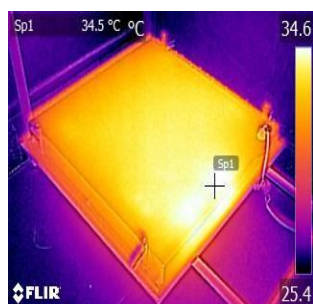
Available Variant	25W / 30W / 35W / 40W / 50W / 60W / 80W / 100W
System Efficacy(Lm/Watt)	>100 lm/W
L70 Life	>54,000 Br.hrs
Operating Temperature	From 0° to +50° C

#### LED Driver Specification

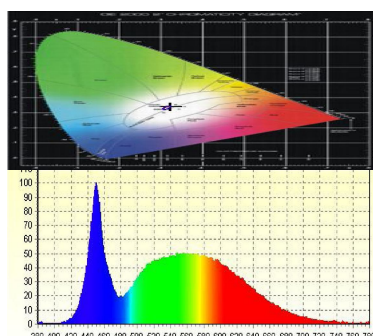
Type of Driver	Constant Current
Input Voltage Range	150 VAC ~ 265 VAC
Frequency Range	50 Hz
Power factor	> 0.97
Total Harmonic Distortion	< 10 %
Surge Protection	4 kV
Protection	Surge Protection Output Short Circuit, Overload Protection Over Voltage Protection, Mis- Wiring Protection,
EMI / EMC	EMI / EMC compliance (optional)

#### LED lamp

Light Source	SMD LED
Lamp Efficacy	>150 lm/W
Colour Temperature	1700K-6500K, @590nm Sodium Light also available
CRI	>70
Certification/Report	LM80, Photo Biologically safe
Beam Angle	120°



Good Thermal  
Management for  
maintenance free long life



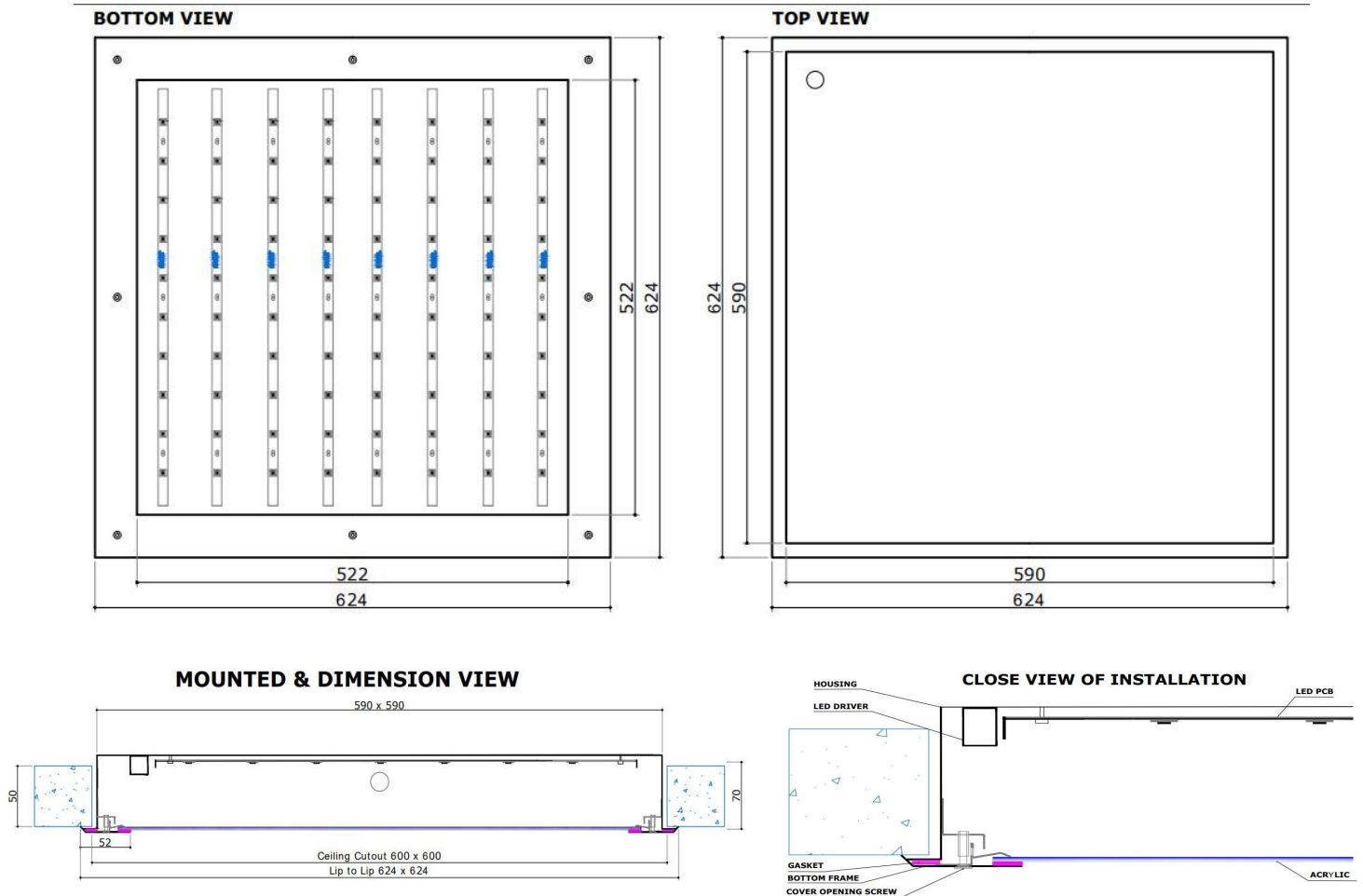
In-house  
photometry test lab



Electrical power analysis  
and insulation safety  
testing of 100% products

# Recessed Mounting Bottom Openable Cleanroom

## DIMENSIONAL DRAWINGS



## Product Code Nomenclature

**Clara**

Product  
Family  
Name

**BO**

Bottom  
Openable

**CR**

Cleanroom  
Light

**25W**

Available  
Wattage:  
- 25w  
- 30w  
- 40w  
- 50w  
- 60w  
- 80w  
- 100w

**7**

CRI  
>70

**65**

Available CCT options  
- 6500K  
- 5700K  
- 5000K  
- 4000K  
- 3000K  
- 1700K

**S**

- ON-OFF Switching (S)  
- Analog Dimming (AN)  
- DALI Dimmable (DA)

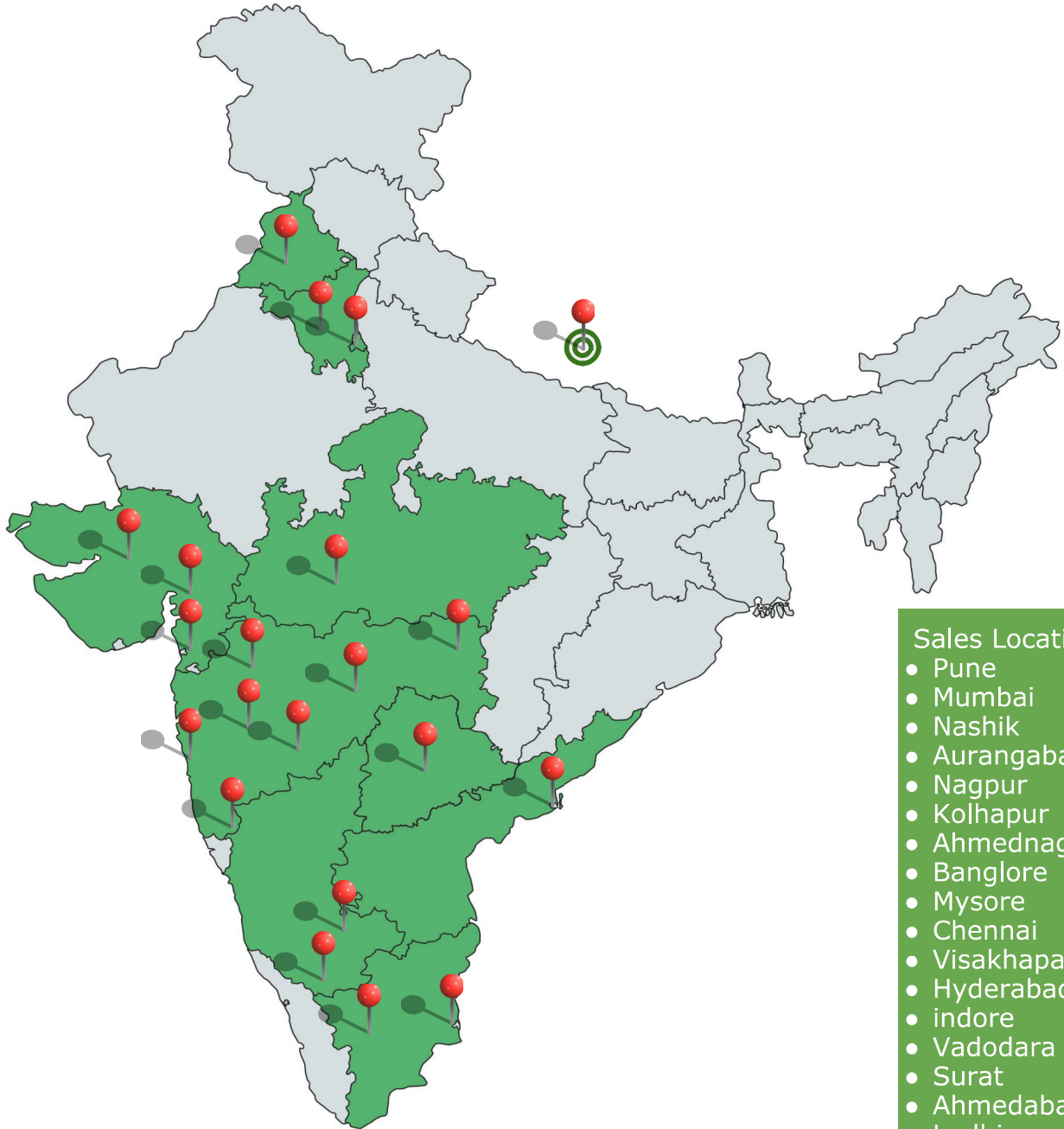
\*Product Codes may vary according to requirement.



**Eetamax**  
Energy Efficient LED Lighting Systems



# Eetamax Sales Locations



## Sales Locations :

- Pune
- Mumbai
- Nashik
- Aurangabad
- Nagpur
- Kolhapur
- Ahmednagar
- Banglore
- Mysore
- Chennai
- Visakhapatnam
- Hyderabad
- indore
- Vadodara
- Surat
- Ahmedabad
- Ludhiana
- Bahadurgarh
- Delhi
- Nepal

Contact Us

**Eetamax Energy Solutions Pvt. Ltd.**

L-141,MIDC Industrial Area, Ahmednagar- 414111,Maharashtra India

Email : [marketing@eetamax.com](mailto:marketing@eetamax.com) | Website : [www.eetamax.com](http://www.eetamax.com)

Follow Us on Social Media

